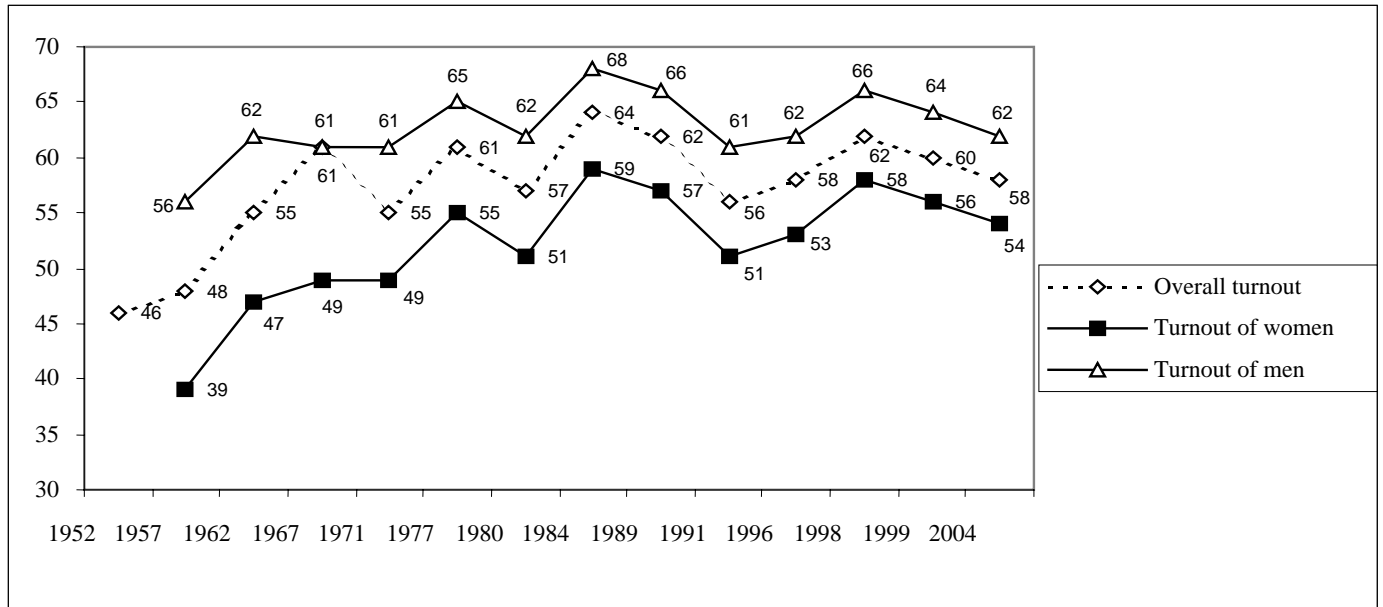
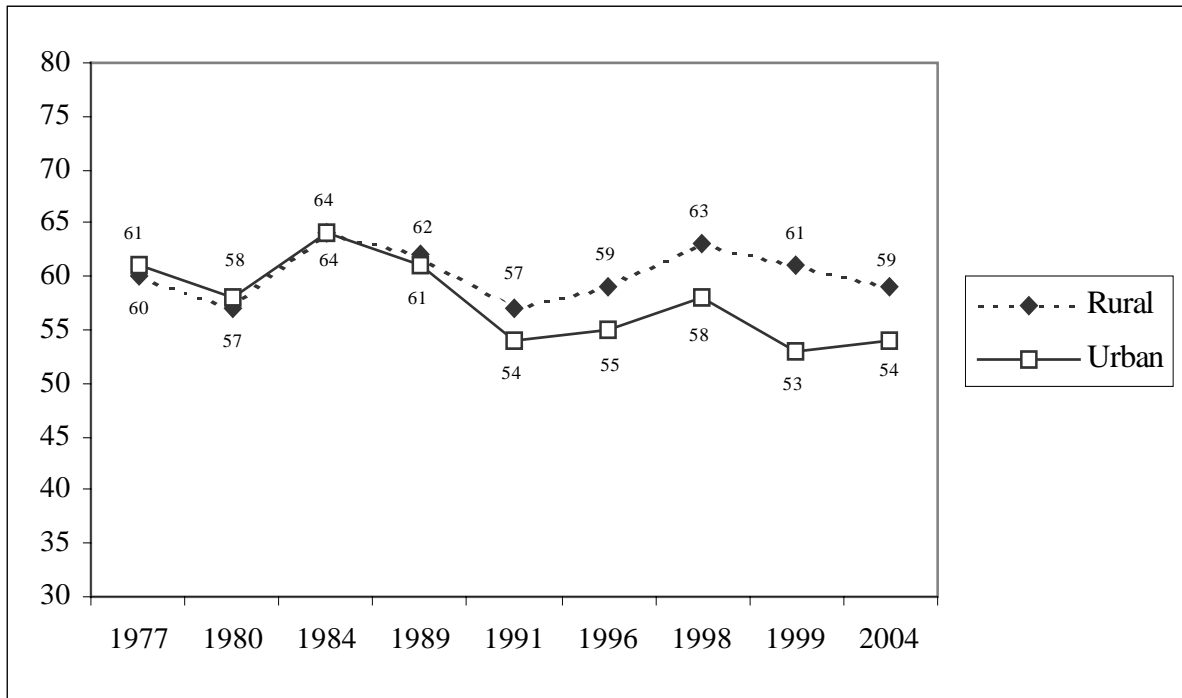


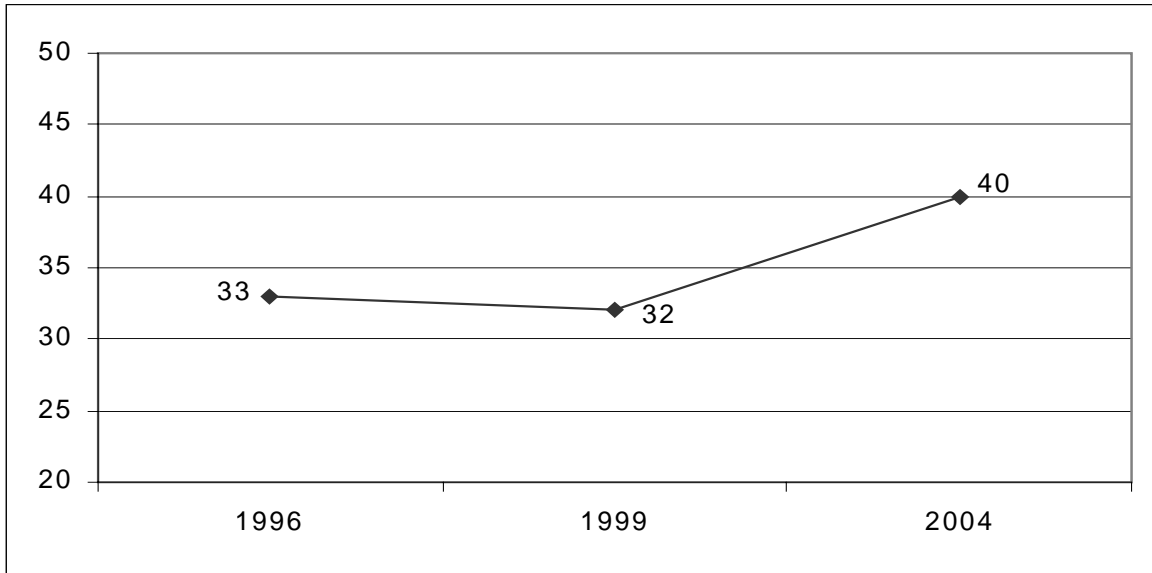
### Voter Turnout in General Elections (Lower House), 1952–2004



### Turnout in rural and urban constituencies



**Increasing interest in Election Campaign (%)**



**Increasing Participation in election campaign**

<b>Political Participation</b>	<b>NES 1999</b>	<b>NES 2004</b>
Low Participation	81	68
Medium Participation	11	18
High Participation	8	14

**Increasing belief that political parties are important (%)**

